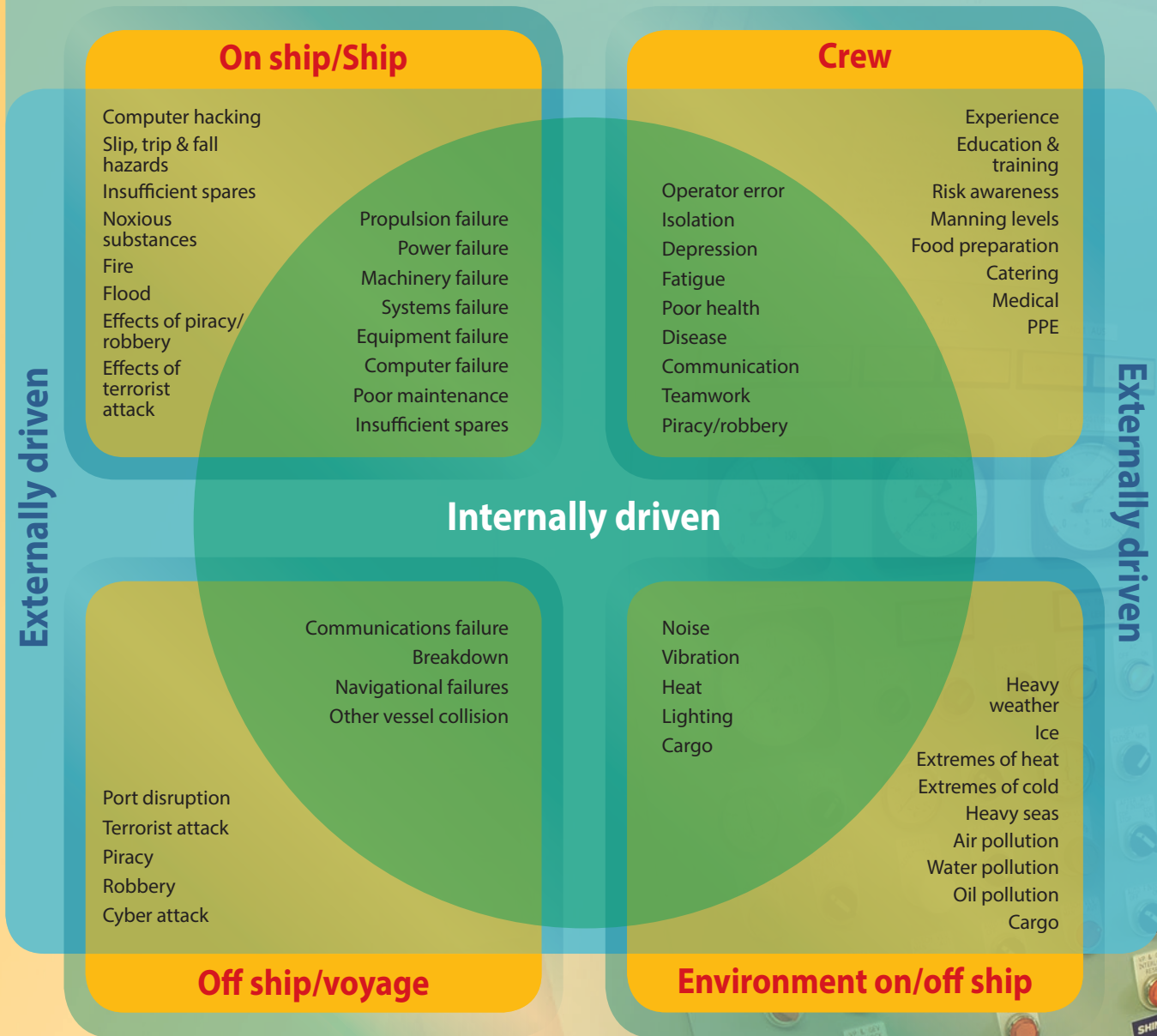


HSSEQ - Risks & Hazards



The Process



Issue No.26
A human-centred approach to HSEQ

http://www.he-alert.org/filemanager/root/site_assets/centrespreads/centrespread_26.pdf

There are a growing number of codes and standards and guidelines related to different aspects of maritime Health Safety, Security, Environmental and Quality (HSSEQ) management, including:

- ISM Code (Safety & Environmental Protection)
- Guidelines for implementing the occupational safety and health provisions of the Maritime Labour Convention, 2006
- ISPS Code (Security)
- ISO 9001 (Quality)
- ISO 31000:2009 (Risk Management)

The core of these is Risk Management, for which ISO 31000:2009 provides generic guidelines. When managing risk it is important to consider the human element. This centrespread focuses on the human element and human-system aspects of risks in the context of total HSSEQ onboard ship. See also: *A structured approach to Enterprise Risk Management (ERM) and the requirements of ISO 31000* published by the Institute of Risk Management (IRM) - https://www.theirm.org/media/886062/ISO3100_doc.pdf

