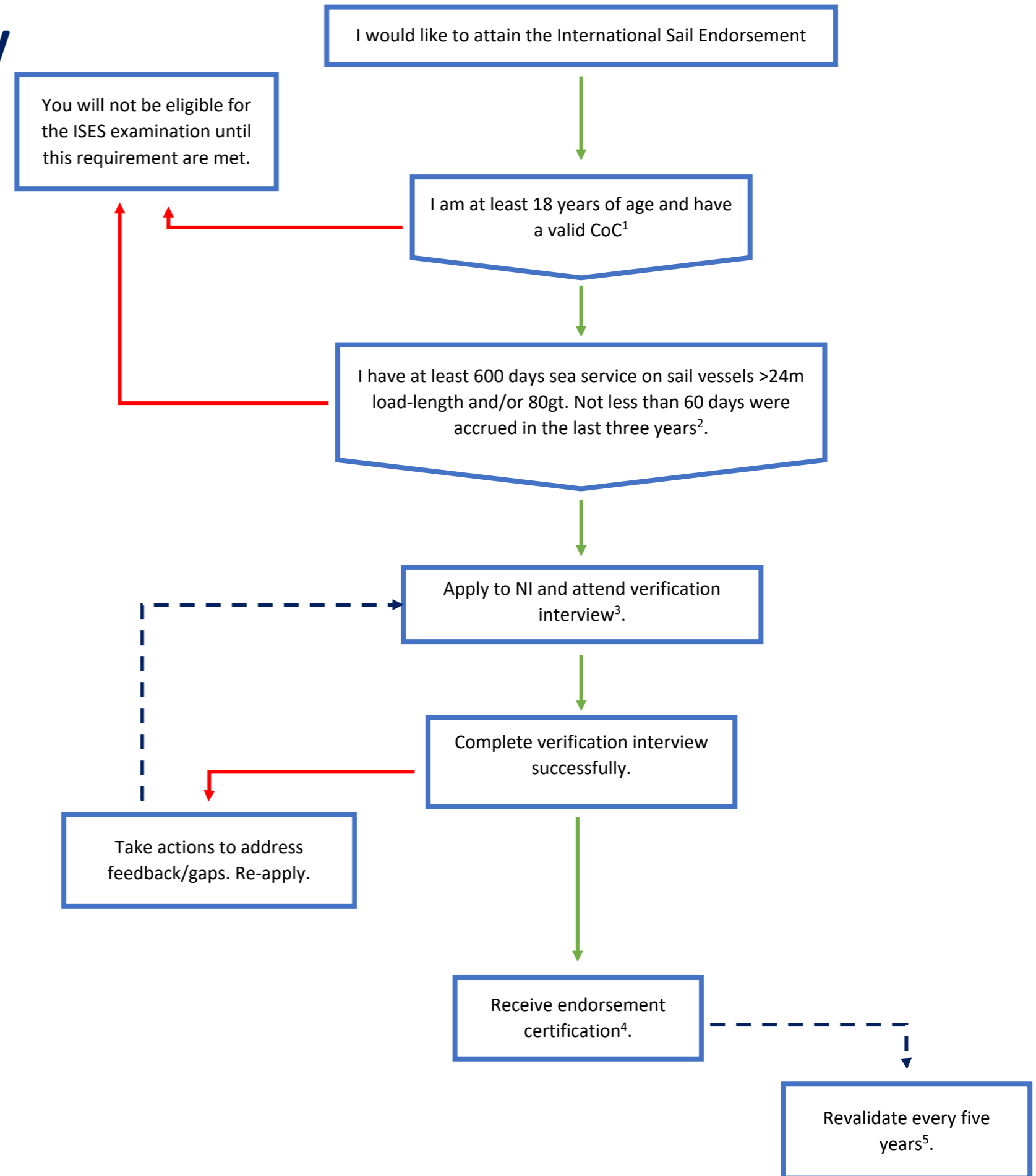


Experienced Candidate Pathway

If you've identified yourself as an 'Experienced Candidate', you'll need to follow the adjacent flowchart to attain the Sail Endorsement.

Fees for the Interview and Certification are detailed in the fees section of the handbook.



¹ The International Maritime Organization's (IMO) website holds a list of national authorities maintaining registers of certificates and endorsement. The list can be found [here](#). The IMO website further allows you to verify your Certificate of Competency (COC), you can do this using this [link](#).

² A day of service means a period of not less than 8 hours in any 24 hour period engaged in duties pertinent to the operation of a vessel underway. A vessel underway is a vessel not made fast to the shore, at anchor or aground. Sea service accrued to obtain a certificate of competency may be counted.

³ The interview will be conducted either face-to-face or via Zoom. Where possible the interview will be facilitated by The Nautical Institute.

⁴ The International Sail Endorsement is appended to a certificate of competency and remains valid only for so long as the certificate of competency is valid.

⁵ The International Sail endorsement is revalidated every five years subject to a minimum of 60 days service (see note 2) in the deck department on sail vessels not less than 24m load-line length or 80gt.