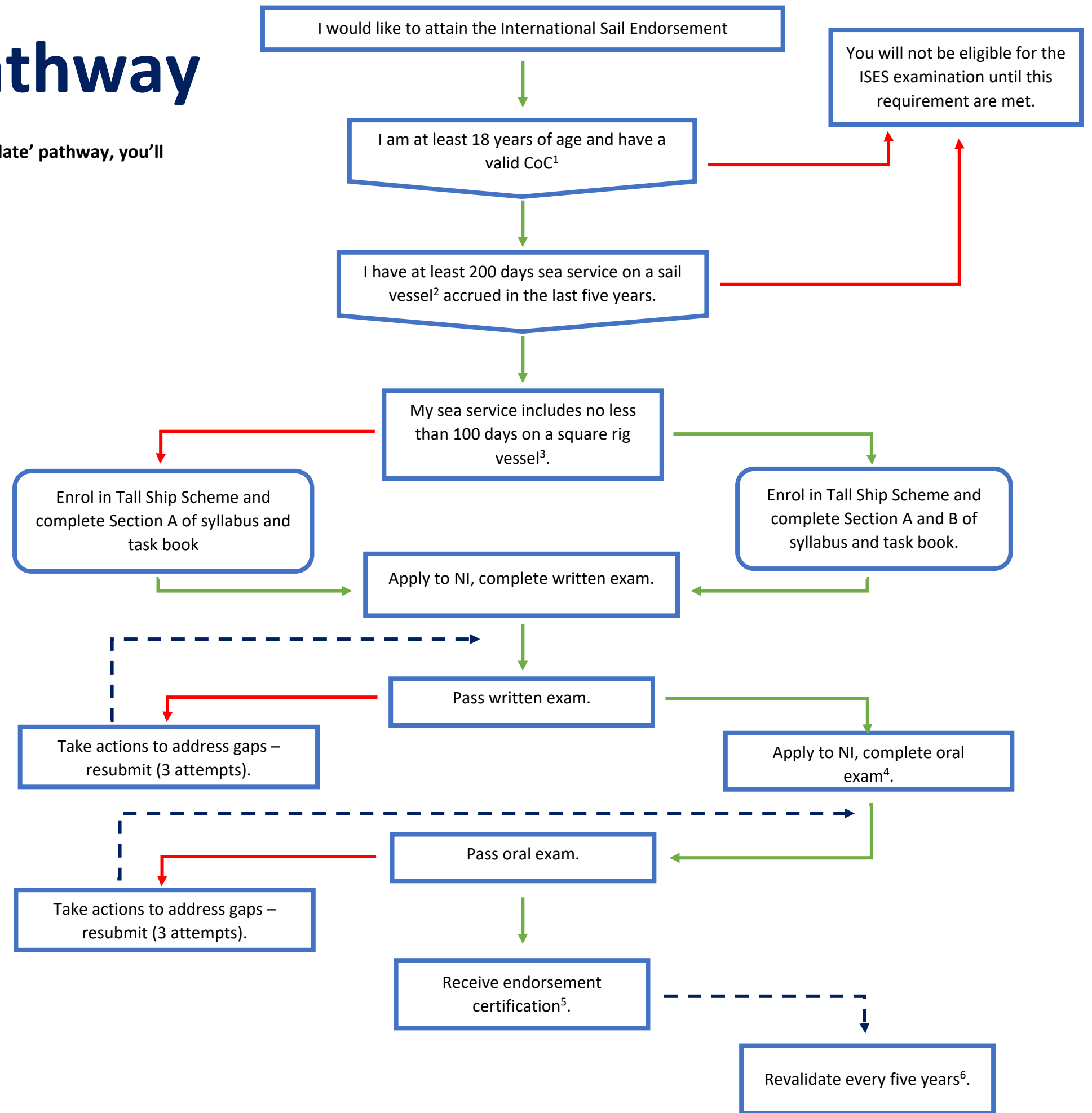


New Candidate Pathway

If you've identified yourself as needing to go through the 'New Candidate' pathway, you'll need to follow the adjacent flowchart to attain the Sail Endorsement.



¹ The International Maritime Organization's (IMO) website holds a list of national authorities maintaining registers of certificates and endorsement. The list can be found [here](#). The IMO website further allows you to verify your Certificate of Competency (CoC), you can do this using this [link](#).

² A day of service means a period of not less than 8 hours in any 24 hour period engaged in duties pertinent to the operation of a vessel underway. A vessel underway is a vessel not made fast to the shore, at anchor or aground. Sea service accrued to obtain a Certificate of Competency may be counted.

³ A square rig vessel is one that appears as such on her certificate of registry or any sailing vessel whose source of motive power is derived mainly from square sail(s).

⁴ The oral examination must be completed within 1 year of passing the written examination. Oral examinations are conducted face-to-face either online or in person before an approved examiner.

⁵ The International Sail Endorsement is appended to a Certificate of Competency and remains valid only for so long as the candidates' Certificate of Competency is valid.

⁶ The International Sail endorsement is revalidated every five years subject to a minimum of 60 days service (see note 2) in the deck department on sail vessels not less than 24m load-line length or 80gt.